

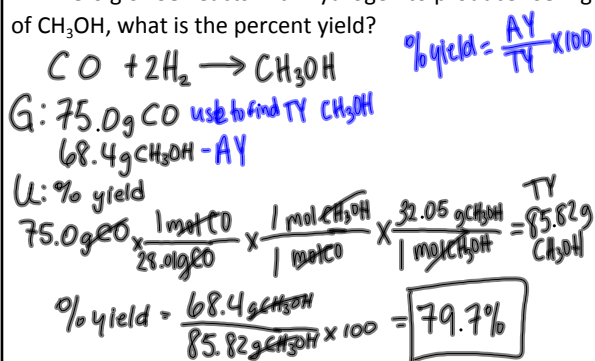
Percent Yield

- Theoretical yield – max amount of product that can be produced from a given reactant (what you should get)
- Actual yield – measured amount of a product obtained from a reaction (what you actually got from an experiment)
- Percent yield = $\frac{\text{actual yield}}{\text{theoretical yield}} \times 100$

Oct 31-10:31 AM

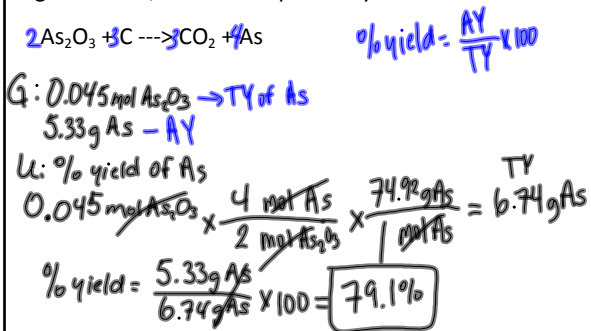
Oct 31-10:32 AM

1. If 75.0 g of CO reacts with hydrogen to produce 68.4 g of CH₃OH, what is the percent yield?

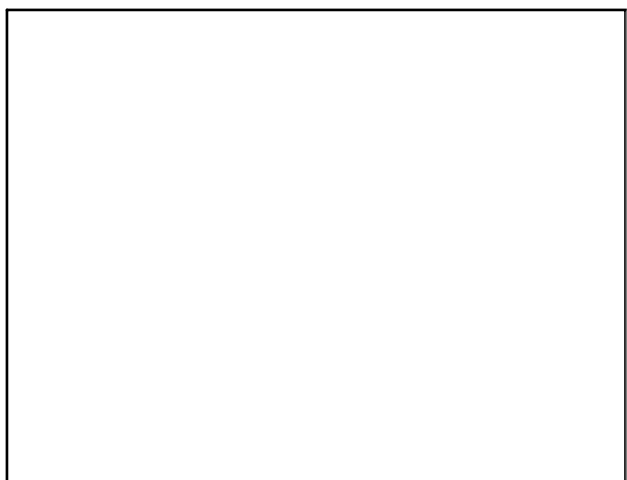


Oct 31-10:33 AM

2. If 0.045 mol of As₂O₃ reacts with carbon to produce 5.33 g of arsenic, what is the percent yield of arsenic?



Oct 31-10:33 AM



Nov 7-9:07 AM